



---

## Assembly and Operation Guide



### **TWIST *tilt***



**UM851** 11' octagon



**UM850** 9' octagon

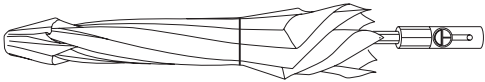
Thank you for purchasing Treasure Garden's TWIST *tilt* Umbrella.  
Please remove all contents from the package, inspect and review checklist.

### CHECKLIST

A - (1) Finial

A - 

B - (1) Canopy/Mainframe

B - 

C - (1) Bottom Pole

C - 

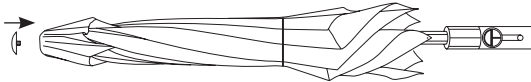
### IMPORTANT:

It is imperative to use appropriate base weight for your size umbrella. The minimum base weight recommended for the 11' TWIST *tilt* is 80lbs; 9' TWIST *tilt* is 50lbs.

## STEP 1

### SET UP

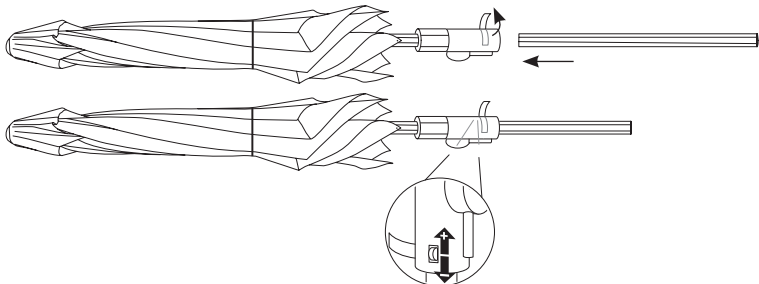
- Carefully remove umbrella from box. Lay umbrella on a clean, soft surface. Attach finial to top of canopy/mainframe by turning clockwise to secure.



- Open release clamp on housing to disengage lock. Insert bottom pole into canopy/mainframe pole.

### Note:

- Release clamp may loosen over time. To apply more tension, turn dial upward to ensure bottom pole is secure.



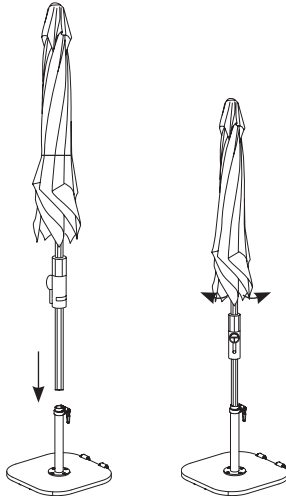
- Close release clamp to lock bottom pole into canopy/mainframe.



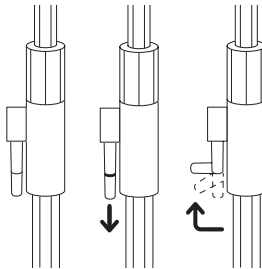
## STEP 2

### OPENING UMBRELLA

- Turn the umbrella upright and insert into umbrella base. Secure umbrella in base.
- Untie canopy string and gently loosen ribs.



- Gently pull down handle and lift up to engage crank.



- Turn crank handle clockwise to open umbrella to its fully open position.
- Release crank handle.

#### Note:

- Crank handle will automatically return to standard position.

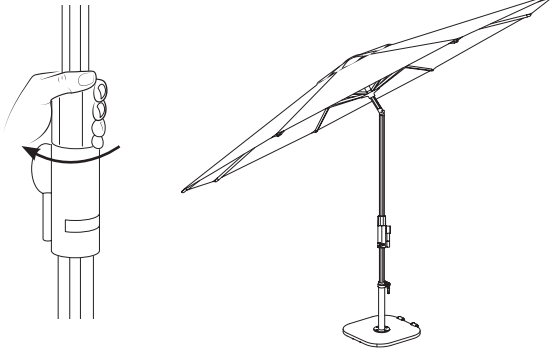


### STEP 3 TILTING UMBRELLA

#### **IMPORTANT: PRIOR TO USING TILT FEATURE.**

To avoid personal injury or damage to the umbrella, make sure the area behind you is clear and free from any furniture or structure.

- To tilt, simply twist the collar in clockwise direction until desired tilt position is reached.



### STEP 4 ROTATING UMBRELLA

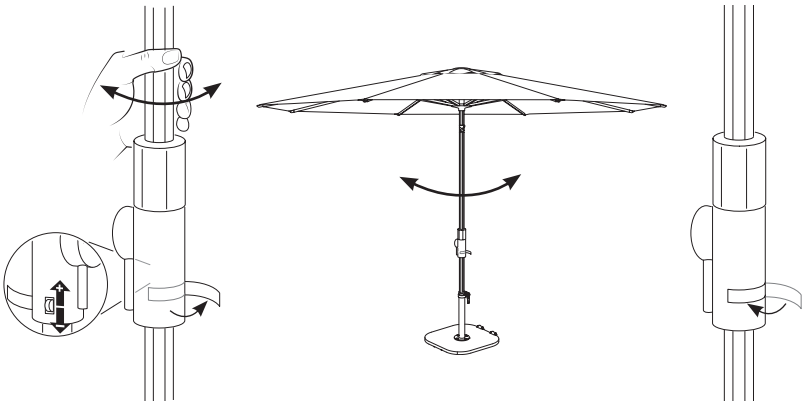
#### **IMPORTANT: PRIOR TO USING 360° ROTATION FEATURE.**

To avoid personal injury or damage to the umbrella, make sure the area behind you is clear and free from any furniture or structure.

- Open release clamp on housing to disengage lock.
- Rotate upper pole in either direction until umbrella reaches desired position.
- Close release clamp to lock into position.

#### **Note:**

- Release clamp may loosen over time. While release clamp is open, apply more tension by turning dial upward to ensure umbrella is secure.



## STEP 5

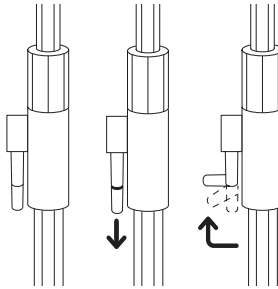
## CLOSING UMBRELLA

Prior to closing ensure that the canopy is in a level (non-vertical tilt) position.

- Twist collar in counter-clockwise direction to bring umbrella back to a horizontal position.



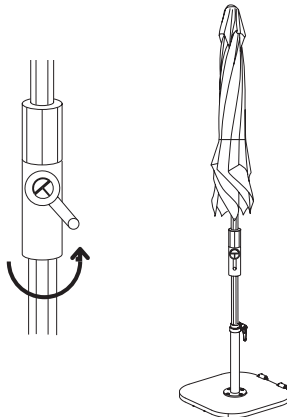
- Gently pull down handle and lift up to engage crank.



- Turn crank handle counter-clockwise to close umbrella.
- Release crank handle.
- Tie string around canopy and cover umbrella with protective cover (sold separately).

### Note:

- Crank handle will automatically return to standard position.



## SAFETY PRECAUTIONS

- To reduce risk of personal injury in which a person is injured or harmed, and/or damage to personal property, read and follow the Assembly Guide prior to assembling and operating umbrella and base.
- Close and store the umbrella in windy conditions or when a storm approaches. Never allow the umbrella to flap in the wind; this could cause personal injury, damage to personal property, damage to umbrella and/or umbrella canopy. Do not use tilting function during windy conditions.
- Keep umbrella secured to umbrella base at all times. Base knobs may loosen over time. Simply tighten base knobs during use of umbrella to ensure umbrella is secure.
- Do not leave open umbrella unattended. If damage occurs, this is not covered by the warranty.
- When adjusting the umbrella, make sure that no person(s), item(s) or personal property are close to the umbrella. This is important to prevent injury or material damage.
- Do not allow children to play on or with umbrella or umbrella base.
- When adjusting or assembling the umbrella or umbrella base, make sure fingers, toes or any other parts of the body are clear from moving parts. Failing to do so may result in serious injury.

## CARE AND MAINTENANCE

- When not in use, close and cover umbrella with a protective cover (sold separately).
- Allow a wet canopy to dry while in open position, but do not leave unattended.
- If necessary, clean the fabric with lukewarm water, mild detergent, and a sponge.
- Wipe sliding marks on the aluminum poles with a damp cloth.

### Winter Storage:

- Store in a dry place.

### After the Winter:

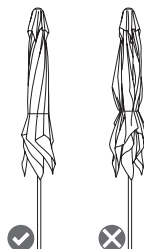
- Check the condition and function of the umbrella. Any defects must be repaired by a professional.

### TO PROPERLY FOLD CANOPY:

The canopy will last longer if you fold it as it was packed and shipped. This technique is similar to the way a parachute is folded and is especially important when folding the canopy for seasonal storage or when left in the closed position for an extended period of time.

Using this technique at all times will significantly extend the life of the canopy.

- When the umbrella has been fully closed, stand in front of the canopy structure and begin the folding process by pulling out two panels opposite the main frame. Pull the two panels together and roll tight into the canopy.
- Once rolled tight, pull adjacent panels out one at a time and fold to the center, alternating sides until all the panels have been pulled out from the arms and folded into the center.
- Tie string around canopy and cover umbrella with a protective cover (sold separately).



## **WARRANTY:**

Treasure Garden warrants this product to be free from defects in original materials and workmanship for a period of 2 years from the date of purchase. If a defect in the original material or workmanship appears during the warranty period; Treasure Garden will (at its discretion) repair or replace the product without charge.

Simply contact your original authorized Treasure Garden dealer with a description of the defect. The dealer will verify the defect and work closely with Treasure Garden to obtain the necessary service. In many cases, simple problems can be solved with a replacement part that can be shipped directly to the dealer for professional installation / repair.

In the event that warranted factory service is required, Treasure Garden will assume the responsibility of the return freight charges for the first year only.

Returned product that (upon receipt and inspection) is deemed to be "not covered" under our warranty, will be shipped / billed at your expense.

This warranty gives you specific legal rights, and you may have other rights which vary from state to state.

**RUST:** Rust is a natural part of the aging process of steel or iron based materials, and is therefore NOT considered a defect.

**CAUTION:** Seaside and in-pool use, salt & chlorides can accumulate on the powder coat finish, leading to finish failure. Failure or neglect to make needed cleanings may cause paint to blister, and such failure will void limited warranty.

**NOTE:** Failure caused by unreasonable or abusive use, or failure caused by neglect of reasonable and necessary care, and any modification to product are not covered by this warranty.

Additionally, acts of nature (including but not limited to wind, hurricanes, tornadoes, and storms) are not covered by this warranty.



[www.treasuregarden.com](http://www.treasuregarden.com)

©2024 Treasure Garden, Inc. - All Rights Reserved.  
v.06.20.24