

WOOD MOUNT KIT

SERIES



TABLE OF CONTENTS

	Page No.
Parts List	1
Instructions	2
Safety and Precautions	5
Warranty	6

PARTS LIST

Please read this entire manual before installation.

Thank you for purchasing Shademaker's Wood Mount Kit. Please remove all contents from packaging, inspect and review parts list.

Some parts may be included in the Styrofoam packaging. Do not discard any packaging or box until assembly is complete.

MKW21 | Wood Mount Kit

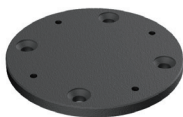
For Aquarius and Libra styles.

A - (2) Adapter Plates

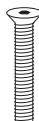
B - (4) Round Countersunk Bolts

C - (1) Hexagon Wrench

A -



B -



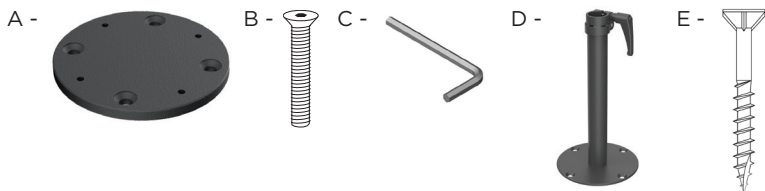
C -



MKW21 | WOOD MOUNT KIT

Wood Mount Kit Requirements:

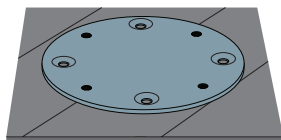
- A - (2) Adapter Plates
- B - (4) Round Countersunk Bolts
- C - (1) Hexagon Wrench
- D - (1) MKSB21 External Stem (sold separately)
- E - (8) Structural Deck Screws (not included)



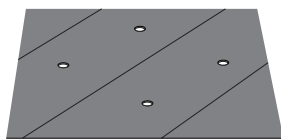
Final installation hardware should be determined by and professionally installed by a licensed contractor. See disclaimer on page 6.

DRILLING DECK PLANKS

- Place adapter plate in the desired location on the deck. The adapter plate should overlap two deck planks evenly. Align the adapter plate so that the proper alignment is ensured.
- Mark the (4) countersunk holes onto the deck for drilling.



- Drill (4) 10mm / 13/32" holes through the deck planks for the round countersunk bolts.
- Remove enough deck screws or nails from these planks to be able to install second adapter base plate underneath the planks.

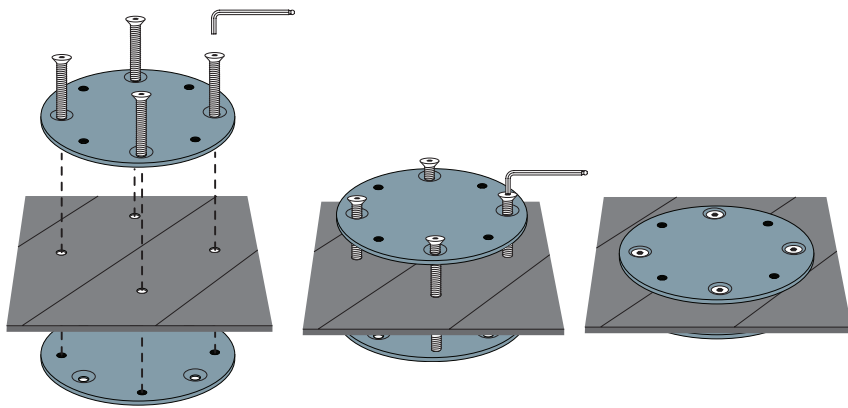


ATTACH ADAPTER PLATES

- Using four (4) round countersunk bolts, attach the two adapter plates together, with one adapter plate on top of the deck boards and the second adapter plate under the deck.

Note: If deck is thicker, longer bolts may be required. Your licensed contractor can help determine appropriate size bolts.

- Insert the (4) round countersunk downward through the top of the countersunk holes on top adapter plate, through the boards, and screw them into the threaded holes in the bottom adapter plate.
- Tighten all (4) countersunk bolts with supplied hexagon wrench.



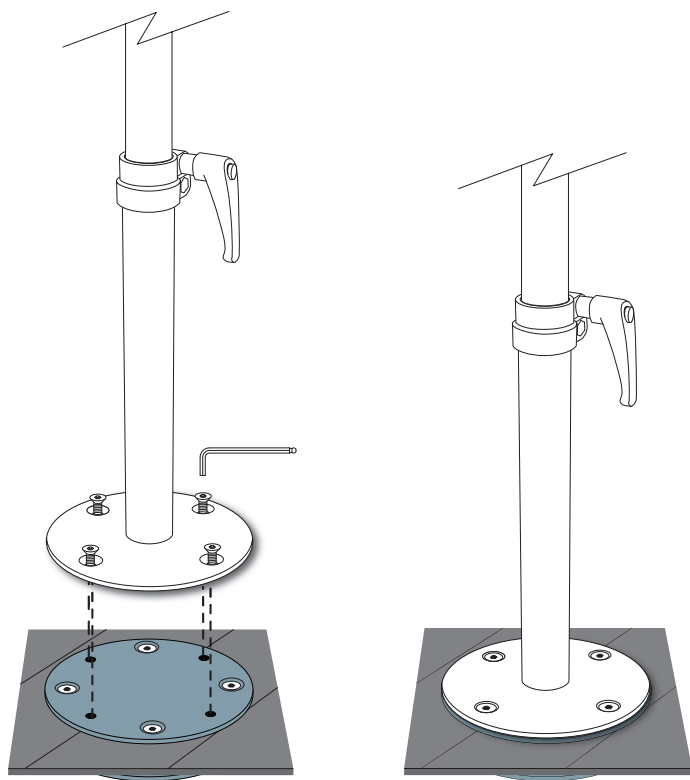
REFASTEN DECK PLANKS

- Refasten the deck planks to the joists by screwing the (8) structural deck screws in the original holes closest to the bottom adapter plate.
- Two structural deck screws should be used on either side of the bottom adapter plate and top adapter plate in each plank.

ATTACH EXTERNAL STEM

(Required; Sold separately)

- Place external stem onto top adapter plate.
- Insert (4) stem bolts into external stem countersunk holes and screw them into the threaded holes on adapter plate.
- Tighten with hexagon wrench.



INSTALL UMBRELLA

- Carefully lift and insert umbrella into external stem.
- Rotate umbrella to desired position.
- Tighten base stem clamp by turning handle clockwise to secure umbrella in place.
- See your umbrella instruction manual for further assistance.

NOTE: Base stem clamp on external stem may loosen over time. Simply tighten clamp during use of umbrella.

You are now ready to operate your umbrella!

SAFETY AND PRECAUTIONS

- To reduce risk of personal injury in which a person is injured or harmed, and/or damage to personal property, read and follow the Owner's Manual prior to assembling and operating umbrella and base.
- Close and store the umbrella in windy conditions or when a storm approaches. Never allow the umbrella to flap in the wind; this could cause personal injury, damage to personal property, damage to umbrella and/or umbrella canopy. Do not use tilting function during windy conditions.
- Keep umbrella secured to umbrella base or mount kit at all times.
- Do not leave open umbrella unattended. If damage occurs, this is not covered by the warranty.
- When adjusting the umbrella, make sure that no person(s), item(s) or personal property are close to the umbrella. This is important to prevent injury or material damage.
- Do not allow children to play on or with umbrella or umbrella base.
- When adjusting or assembling the umbrella or umbrella base, make sure fingers, toes or any other parts of the body are clear from moving parts. Failing to do so may result in serious injury.
- Sufficient base weight must be used to secure umbrellas at all times. Please see base weight matrix at www.shademaker.com for required minimum weight for free-standing applications.

WARRANTY

Shademaker manufactures all its shade styles from the finest aluminum alloys to ensure the strength, durability, and integrity of each and every style. We pride ourselves as a totally vertical operation. This means that we manufacture and produce over 90% of the components used in our products from the raw state. We can monitor every stage of the manufacturing process and maintain a consistent level of quality. Our only business and focus is shade and shade type products. Our goal is that each and every Shademaker style will exceed your expectations at a competitive price that will make you smile.

Replacement parts can be ordered under warranty at no charge, if found that the damage is a manufacture defect.

Upon receipt, please check to ensure you have received all of the parts.

1 Year Limited Warranty

- Adapter plate

What Is NOT Covered: Failure caused by unreasonable or abusive use, or failure caused by neglect of reasonable and necessary care, and any modification to product are not covered by this warranty.

This warranty covers return freight of any warranted product only for the first year. This warranty gives you specific legal rights and you may have other rights which vary from state to state. If the powder coat finish flakes, bubbles, peels or loses color; Shademaker will re-finish or replace the defective bases at its discretion.

Closeout and promotional items sold by the dealer as is are not covered by this warranty. Labor charges are not covered under this limited warranty. Normal wear and tear is not covered under this limited warranty.

Caution: Seaside and indoor pool use, salt & chlorides can accumulate on the powder coat finish, leading to finish failure. Failure or neglect to make needed cleanings may cause paint to blister, and such failure will void limited warranty.

Irregularities in Production Process: The possibility of “Irregularities” in the product surface may occur during the production process. However, these irregularities do not reduce the quality of the product. Shademaker monitors every stage of production to ensure a clean and consistent appearance on every part.

Rust: Rust is a natural part of the aging process of all steel based materials and is therefore NOT considered a defect. Steel plate bases are designed to require minimum maintenance. Bases should be kept clean. Do not let dirt build up on the bases. Never leave bases standing in water. To keep your bases looking their best, you may wish to store them when not in use for an extended period of time.

International Returns: If an item is found to be under warranty Shademaker shall only be responsible for ground shipping charges to the location of the product within the continental United States and Canada. Any duties, express, international or special shipping charges are at the expense of the retail dealer or consumer.

IMPORTANT RESTRICTION FOR PRODUCTS WARRANTY SERVICE:

Shademaker restricts warranty service for products to the country where Shademaker or its authorized retail dealers originally sold the product. It is our policy to continuously improve designs, materials and manufacturing methods in order to provide you with the finest products. Therefore, variations in specifications, materials, prices, styles and finishes may be made without notice.

THE SELLER DISCLAIMS ANY IMPLIED WARRANTY OF MERCHANTABILITY.

Those filing warranty claims outside 1 year or warranty, will be responsible for all shipping, handling, and freight charges on all claims to Shademaker in Baldwin Park, CA. All warranty claims must be submitted with the original proof of purchase, date of purchase, name of dealer, and the description of the damage. The Shademaker warranty is not transferable. Shademaker reserves the right to repair, replace, and/or redesign any product that is returned under a warranty claim.

DISCLAIMER:

The MK mounts kits should only be professionally installed by a licensed contractor duly qualified to perform the installation. Shademaker assumes no liability and expressly disclaims any responsibility for injuries or damages arising from or related to the failure of buyer to have the MK mount kit installed by a licensed professional contractor. Shademaker makes no warranty except as expressly stated herein, and no warranty except Title to Materials furnished shall be implied with respect to the order.

DISCLAIMER OF WARRANTIES:

Except as herein expressly set forth, this product is sold "as is" and "with all faults", and without any implied warranty of merchantability -- which warranty is hereby expressly excluded. This product is sold without any implied warranty of fitness for a particular purpose -- which warranty is hereby expressly excluded. Moreover, there are no warranties which extend beyond the description on the face hereof.



13401 Brooks Drive
Baldwin Park, CA 91706
p 626.338.8810
f 626.338.8816
info@shademakerusa.com

shademaker.com

©2025 Shademaker. All rights reserved.

SMOM-MKW-082125